

EN

B200T4

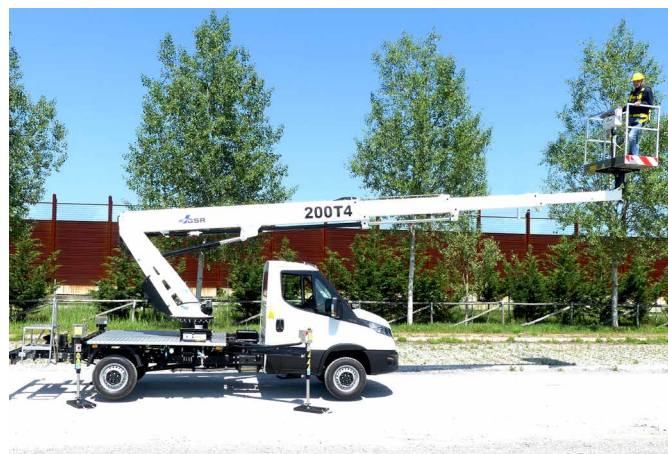
Comfort XEV 19,8 m



The GSR B200T4 platform reaches a new level in its telescopic range on 3.5t vehicles.

While maintaining its traditional rigidity and sturdiness, this model introduces several significant elements of innovation offering improved outreach with reduced footprints.

This machine is simple to use and technologically advanced, with stabilizers in extendible variable version, reduced length and horizontal outreach up to 14 m, it confirms the high-quality standards and innovation of GRS products.



GSR
AERIAL PLATFORMS

www.gsrspa.it

- Horizontal outreach until 14 metres and basket capacity up to 250kg
- Extendible variable stabilization with vertical stabilizers
- 4-stage telescopic boom for compact dimensions, even in length
- Simple and intuitive controls
- Advanced security systems, precise and immediate in use
- Light weight but robust structure
- Compact and balanced on the road like a normal car
- Easy and intuitive, ideal for self-drive hire



Model	Working Height (m)*	Max. Outreach (m)*	Basket Capacity (kg)	Turret Rotation (°)	Basket Rotation (°)	GVW min. (to)*
B200T4 Comfort XEV	19,85	14/9,5	80/250	450	90 + 90	3,5

* Depending on the vehicle

B200T4 Comfort XEV

